



---

# Embedded Server Kit Replacement Guide BPC Core

### Removing the defective board

1. Remove all flow cell units & cables and place the instrument on its side, this will allow you to disassemble part safely.
2. Remove the four screws highlighted below



3. Flip the measurement unit over so that the white plastic cover faces upwards and gently lift the cover to reveal the components underneath.  

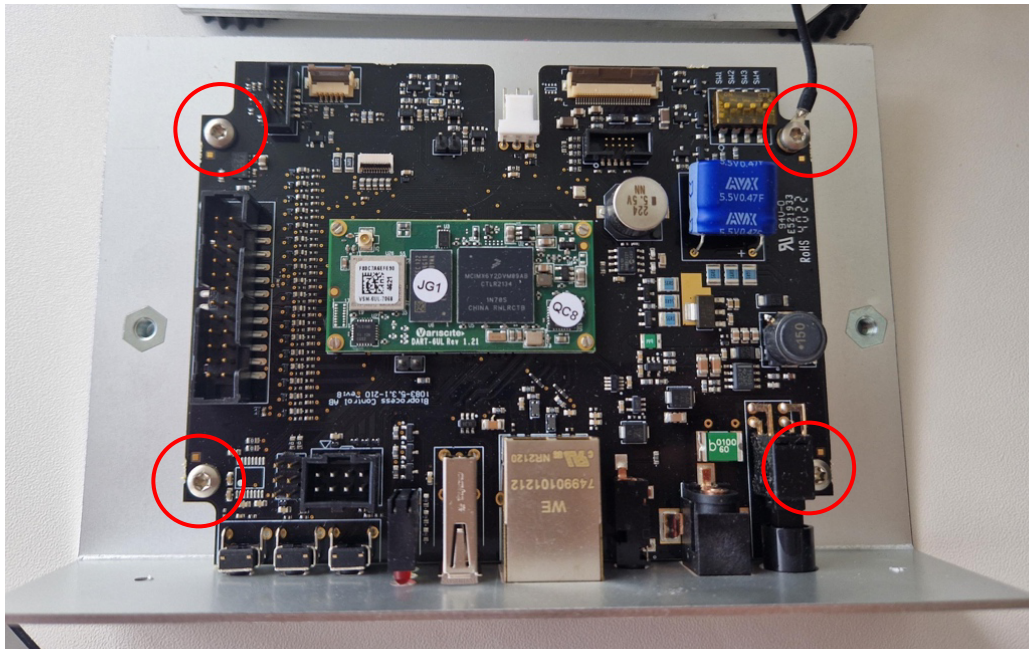
⚠ Be careful - several cables connect the cover, carrier board, and main frame of the measurement unit.
4. Remove the two screws marked in the picture below. Gently pull the parts apart, taking care not to damage any connections.



5. Disconnect the four cables connecting the carrier board to the measurement unit. One of these may also have an additional anchoring point attached via a screw

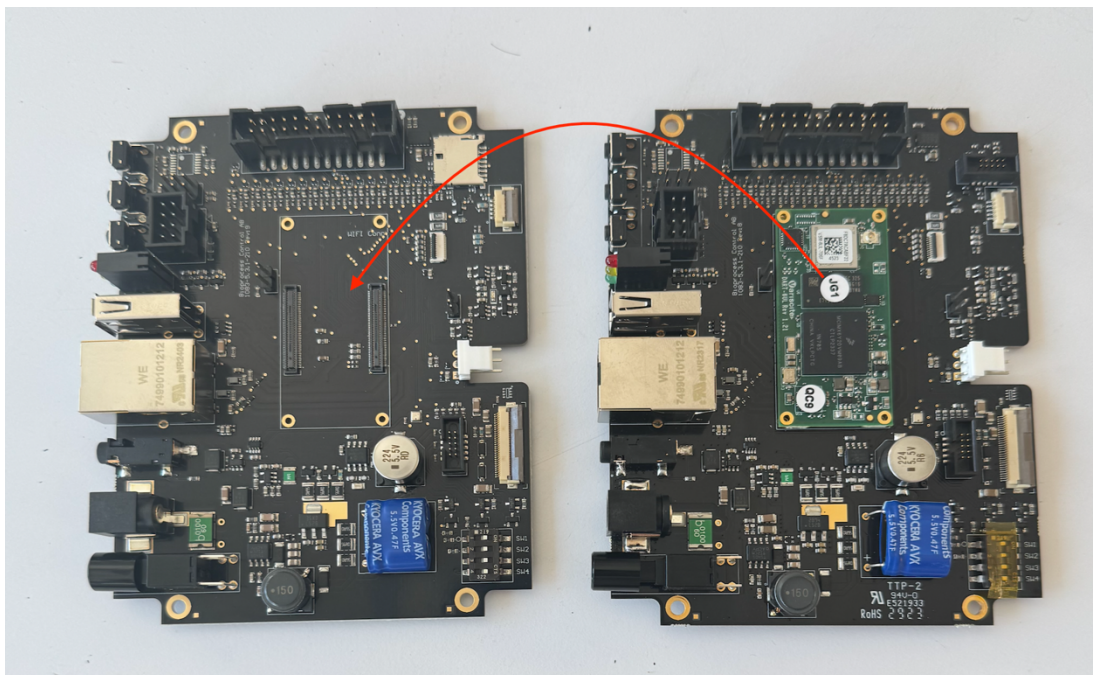


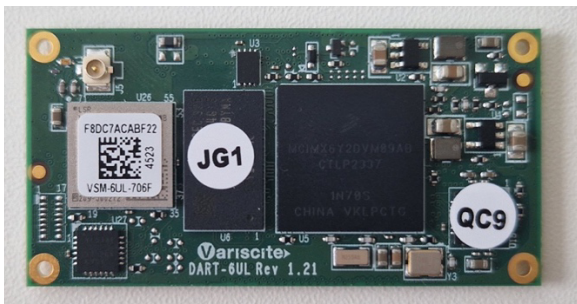
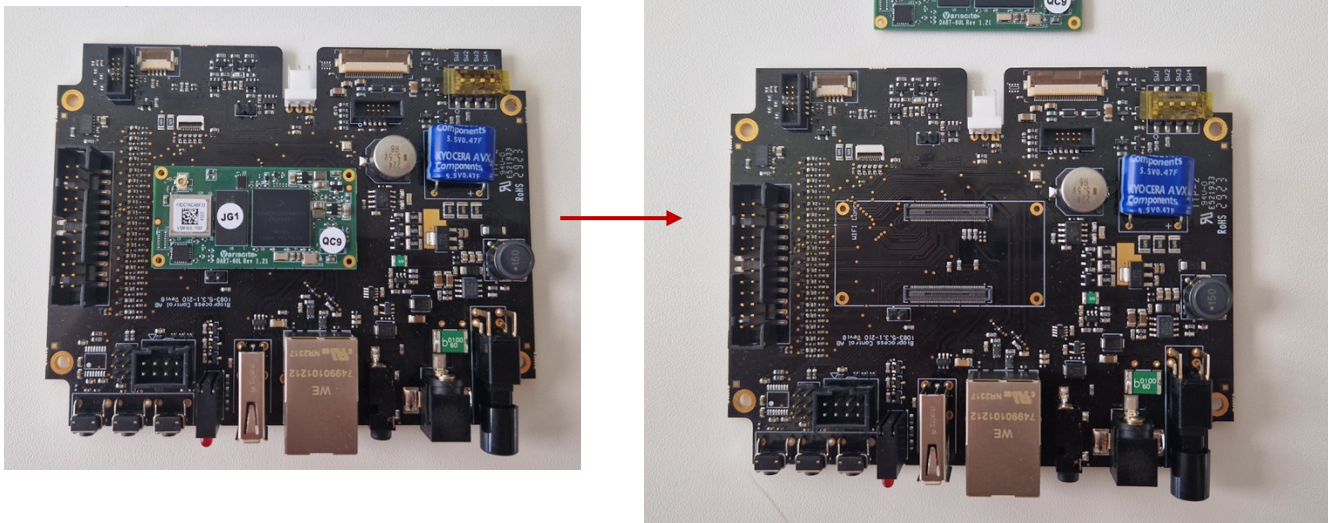
6. You should now be able to remove the metal plate to which the carrier board is attached. Remove the 4 screws securing the carrier board in place to the metal holder.



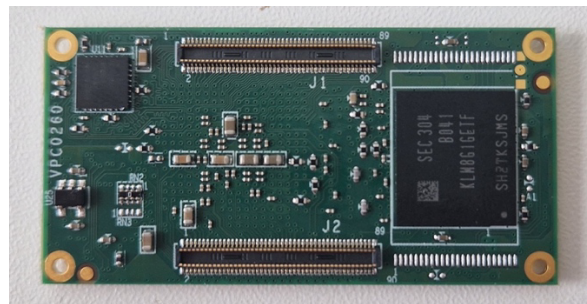
### Replacing the IO board

1. The next steps are to remove the System on Module (SOM) from the old carrier board and place it on the new one as seen in the steps below.





Front



Back

2. Once the SOM is detached, place it on the new board and gently press it down.
 

Note: On new boards, there might be slight resistance when placing the SOM — this is normal. Just make sure it is properly aligned and push down evenly on both sides where the pins are located.
3. Once the SOM is mounted on the new board, just follow steps 1-6 in reverse order to reassemble the Measurement unit.
 

**⚠ Important:** Make sure the cables for the display and the membrane buttons (especially the slightly green membrane connector) are properly connected. These are easy to misalign, so double-check the connections before closing the unit. These connections are highlighted in the picture below:

